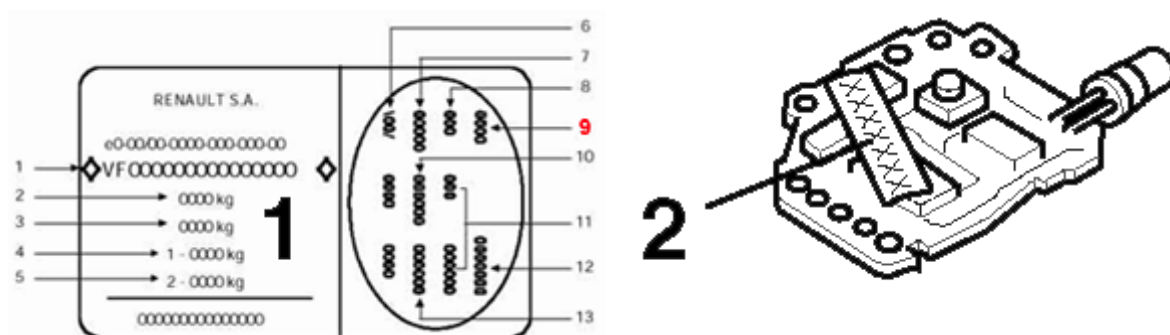


# Test for Renault Key/Immobiliser failures (emergency recode)



## Renault Key/Immobiliser

[Download Renault Key/Immobiliser Test Kit](#)

**Unzip Password is "reman".**

When you have the 4 digit emergency

1. hold central locking button down red immo light flashes slowly count number of 1st digit of immo code and release.
2. hold down central locking button and count 2nd digit and release
3. repeat for 3rd and 4th digits
4. when all numbers entered, ignition off and hold down central locking button immo lights remains constant, press key on/off quickly towards interior mirror. Hopefully plip will resynch.

Once immo light starts flashing -ign on/off and hold c/l button down again until red light remains constant and try again, may take a few goes.

---

## Oval Plate

### The Main Identification of RENAULT Vehicles

Oval Plate is used for identification of RENAULT vehicles since 1909.

The location and design was changed several times during that long period.

In vehicles produced until 1995 You will find the oval plate in engine compartment.

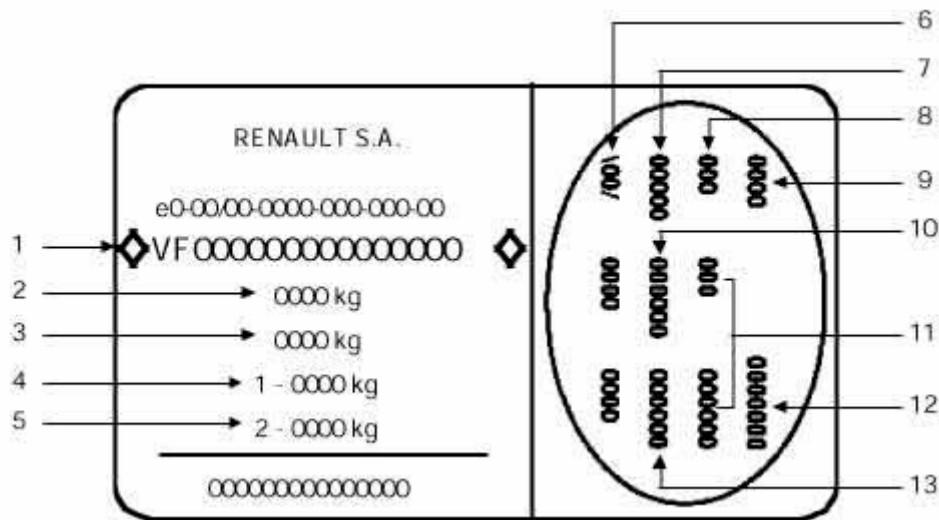
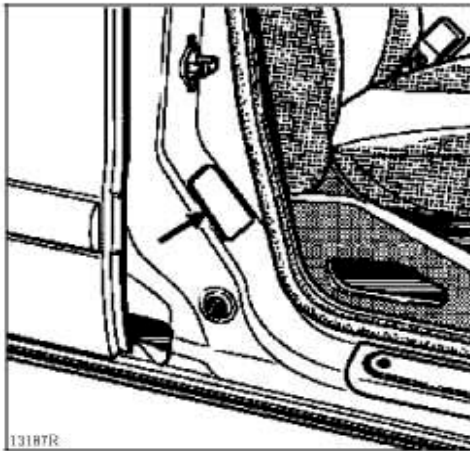
It is made of aluminum and can be located separate or together with obligatory Vehicle Manufacturer Plate.

In vehicles produced after 1995 the Oval Plate is made from plastic in form of sticker located on right side middle door pillar.

It can be seen by opening front passenger door.

**From 1997:**

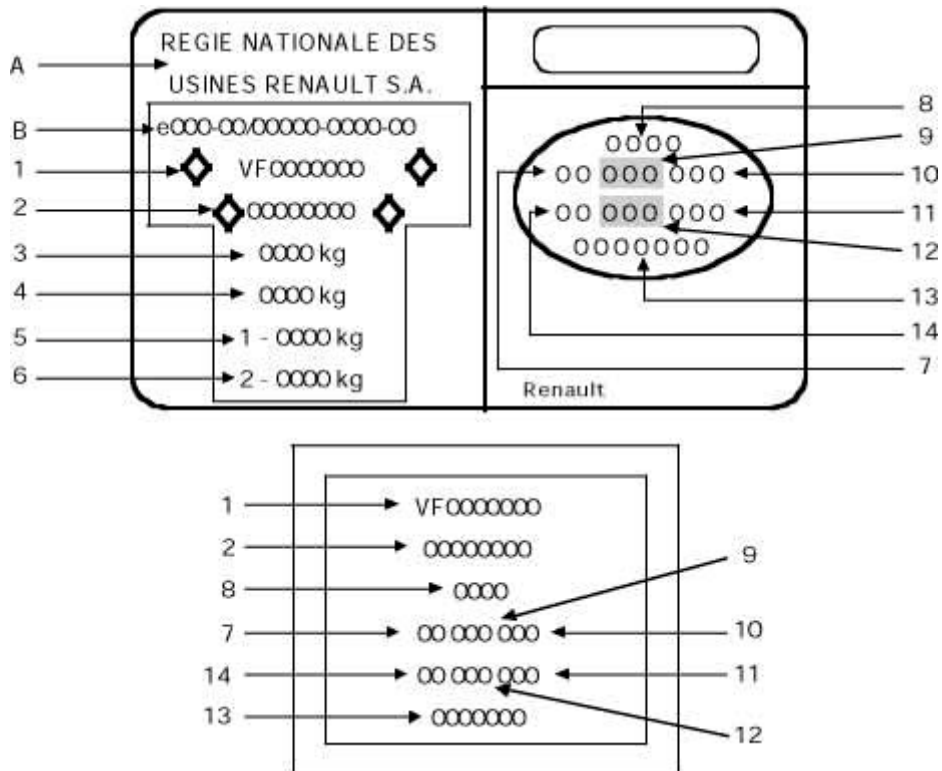
LOCATION OF VEHICLE IDENTIFICATION PLATE



**Number Description**

- |    |  |
|----|--|
| 1  | Type mines of the vehicle and chassis number                             |
| 2  | PTMA [total all up weight of the vehicle                                 |
| 3  | PTR [maximum permitted total train weight - vehicle loaded with trailer] |
| 4  | Maximum permitted weight on the front axle (P.T.M.A. front axle)         |
| 5  | Maximum permitted weight on the rear axle (P.T.M.A. rear axle)           |
| 6  | Technical specifications of the vehicle (Country Code)                   |
| 7  | Paint reference  |
| 8  | Equipment level  |
| 9  | VEHICLE TYPE   |
| 10 | Trim code  |
| 11 | Additional factory optional equipment                                    |
| 12 | FABRICATION NUMBER   |
| 13 | Interior matching trim code  |

## From 1995:

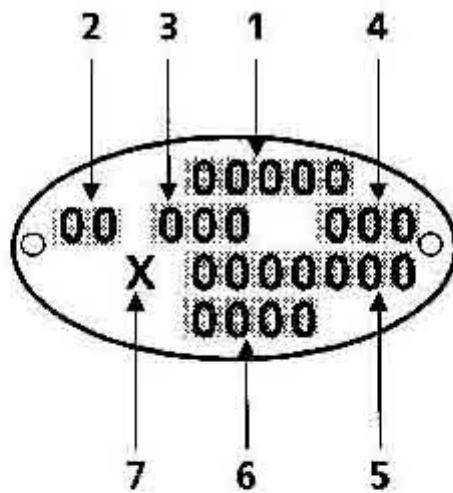


### Number Description

- A the name of the manufacturer
- B the E.E.C. approval number
- 1 the type mines of the vehicle preceded by the world manufacturers identification code (VF1 corresponds to RENAULT FRANCE),
- 2 the chassis number
- 3 the maximum permissible weight
- 4 the maximum permitted total train weight
- 5 the maximum permitted weight on the front axle
- 6 the maximum permitted weight on the rear axle
- 7 the first figure indicates the gearbox or factory options, the second figure indicates the equipment level
- 8 VEHICLE TYPE
- 9 the technical equipment code
- 10 additional factory optional equipment
- 11 the equipment level
- 12 the paint code
- 13 FABRICATION NUMBER
- 14 the trim code

**Before 1995:**

**Located in Engine Compartment**



#### **OVAL PLATE**

This shows:

- At 1 : The vehicle type
- At 2 : Any special features\*
- At 3 : The basic equipment version\*
- At 4 : Options
- At 5 : The fabrication number
- At 6 : The model year\* or paint identification code\*
- At 7 : The factory at which the vehicle was assembled.

**\* 2 - First figure - gearbox type, second figure - equipment level**

**\*3 - Country code**

## Technical Type

**Technical Type identifies vehicle Model, Body Type and Engine, it will be asked when You will order some spare parts**

**It can be found on Oval Plate or sometimes in VIN number just after the manufacturers identification: (VF1 (RENAULT) or VF8 (Matra))**

**Technical Type taken from VIN number sometimes is misleading.**

**Technical Type consist of 4 symbols.**

**Until year 1995: X-YY-Z**

**From year 1995: X-Y-ZZ**

**X - body type**

**YY - project code**

**Z - engine type**

Body Type            X X\*

Hatchback 3 door C 3

Hatchback 5 door B 5

Saloon Utility       S 6

Estate               K A

Cabriolet 2 door    E 7

Coupe 2 door       D 8

Light Van           F G

Monocorp 5 door J N

Passenger Van     J N

Body Type           X X\*

Pick-up              U H

Saloon 2 door       M 2

Saloon 4 door       L 4

Trafic I front WD T -

Trafic I rear WD P -

Trafic I 4x4          V -

Master I front WD R -

Master I rear WD Q -

Estate 3 door        W -

**\*X is used when there are too many versions for certain model to use normal coding (R19, Clio I)**

Project Code	Model
06	Twingo
11	Espace I
29	R 25
37	R 11
40	Super 5/ Express
42	R 9
48	R 21
50	Alpine A 610
53	R 19
54	Safrane
56	Laguna
57	Clio I
63	Espace II
A(64)	Megane I
B(65)	Clio II
C(76)	Kangoo
D(70)	Master II
E(66)	Espace III / Avantime
F	Spider
G	Laguna II
H	Mascott
J	Vel Satis
K	Espace IV
L(83)	Trafic II
M	Megane II

---

# Fabrication Number

**On Oval Plate You can see Fabrication Number. It contains serial number of vehicle from certain Technical Type and the production plant identification.**

**This number identifies vehicles age and origin, it will be asked when You will order some spare parts.**

**First symbol from Fabrication Number identifies the factory of production. They are:**

A	Setubal /Guarda (Portugal)
B	Batilly (SOVAB) (France)
C	Creil (France)
D	Douai (France)
E	Palencia (Spain)
F	Flins (France)
G	Grand Couronne (France)
G	Novo Mesto (Slovenie)
H	Haren (Belgium)
H	TRW (Sweden)
J	Billancourt (France)
J	Curitiba (Brasil)
K	Dieppe (France)
L	Cordoba (Argentina)
M	Medellin (Colombie)
N	Sahagun (Mexico)
O	Guyancourt Technocentre (France)
P	Vallejo (Mexico)
Q	Kenosha (American Motor Corporation)
R	Bursa (Turkey)
S	Sandouville (France)
T	Romorantin (Matra Automobile)
U	Maubeuge (France)
V	FASA (Spain)
W	Valladolid (Spain)
X	Heuliez (Spain)
Y	Novo Mesto (Slovenie)
Z	Bramalea (American Motor Corporation)